




PRE-NURSERY FEE STRUCTURE FOR ACADEMIC YEAR 2026-27

One time registration fee - Rs. 1,000/- (Non-Refundable)

Grade	Charges	Payment Breakup	Remarks
 Pre-Nursery	Admission Fee - Rs. 60,000 (Non-Refundable)	Rs. 20,000 Rs. 40,000	At the time of Admission When child is promoted to UKG
	Security Deposit - Rs. 40,000 (Refundable)	Rs. 20,000 Rs. 20,000	At the time of Admission When child is promoted to UKG
	Annual Fee	Rs. 16,000	Payable in two installments
	Tuition Fee	Rs. 37,500	Payable Quarterly

OPTIONAL FACILITIES



MEALS

Amount	Payment Breakup
Rs. 8,850	Quarterly

TRANSPORT

Distance	Amount	Payment Breakup	Remarks
0-8 kms	Rs. 12,000	Quarterly	Payable Quarterly
8-16 kms	Rs. 13,500	Quarterly	Payable Quarterly (Toll Tax Separate)
16 kms & above	Rs. 14,500	Quarterly	Payable Quarterly (Toll Tax Separate)

DAYCARE

Particulars	Vega Learners	Non - Vega Learners
Registration Fee	Rs. 10,000/- one time	Rs. 15,000/- one time
Pre-Nursery, Nursery & LKG (01:00 PM - 03:00 PM)	Rs. 2,500/- per month	Rs. 4,000/- per month
Pre-Nursery, Nursery & LKG (01:00 PM - 06:30 PM)	Rs. 6,500/- per month	Rs. 8,500/- per month
UKG Upwards (03:00 PM - 06:30 PM)	Rs. 6,000/- per month	Rs. 7,000/- per month
Evening Snacks	Rs. 1,000/- per month	Rs. 1,000/- per month
Non-Operational School Days	Rs. 500/- per day	Rs. 700/- per day
Extra Hours	Rs. 100/- per hr	Rs. 150/- per hr

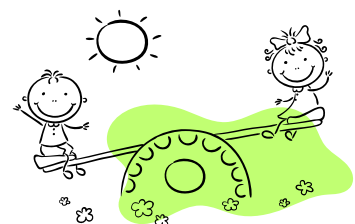
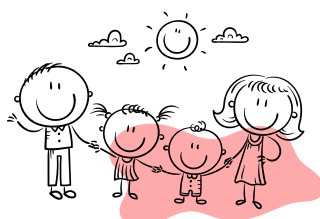
INCLUSIVE EDUCATIONAL SUPPORT

Additional charges will apply for services provided by the Special Needs team and any required resources.



IMPORTANT DETAILS

- The program includes breakfast, lunch, and fruits for all learners, with snacks offered exclusively for daycare learners opting for 3:00 pm to 6:30 pm slot.
- The meal program offers an all inclusive option (breakfast, lunch and fruit). Partial meal options are not available.
- Since meal fee is charged quarterly, opting out will apply for the full quarter. Parents can opt back in only at the start of the next quarter by submitting a written request to the Parent Engagement Representative at least one month in advance.
- Air-conditioned vehicles equipped with GPS tracking, CCTV cameras, seat belts, and female attendants are provided.
- Transport and meal fees are charged for 11 months but divided into four equal quarterly installments for payment.
- Cost of stationery will be on actuals.
- All charges are non-refundable, except for the security deposit.



FEE STRUCTURE FOR ACADEMIC YEAR 2026-27

Nursery - Grade XII

One time registration fee - Rs. 1,000/- (Non-Refundable)			
Charges	Amount	Payment Type	Remarks
Admission Fee	Rs. 60,000	One Time	Non-Refundable
Security Deposit	Rs. 40,000	One Time	Refundable
Composite Fee Payable Quarterly	Rs. 64,430	Quarterly	Nursery, LKG & UKG
	Rs. 69,660	Quarterly	Grade I to V
	Rs. 74,240	Quarterly	Grade VI to XII

OPTIONAL FACILITIES

Meals

Amount	Payment Breakup
Rs. 8,850	Quarterly

Transport

Distance	Amount	Payment Breakup	Remarks
0-8 kms	Rs. 12,000	Quarterly	Payable Quarterly
8-16 kms	Rs. 13,500	Quarterly	Payable Quarterly (Toll Tax Separate)
16 kms & above	Rs. 14,500	Quarterly	Payable Quarterly (Toll Tax Separate)

Daycare

Particulars	Vega Learners	Non - Vega Learners
Registration Fee	Rs. 10,000/- one time	Rs. 15,000/- one time
Pre-Nursery, Nursery & LKG (01:00 PM - 03:00 PM)	Rs. 2,500/-per month	Rs. 4,000/- per month
Pre-Nursery, Nursery & LKG (01:00 PM - 06:30 PM)	Rs. 6,500/- per month	Rs. 8,500/- per month
UKG Upwards (03:00 PM - 06:30 PM)	Rs. 6,000/- per month	Rs. 7,000/- per month
Evening Snacks	Rs. 1,000/- per month	Rs. 1,000/- per month
Non-Operational School Days	Rs. 500/- per day	Rs. 700/- per day
Extra Hours	Rs. 100/- per hr	Rs. 150/- per hr

INCLUSIVE EDUCATIONAL SUPPORT

Additional charges will apply for services provided by the Special Needs team and any required resources.

IMPORTANT DETAILS

- The program includes breakfast, lunch, and fruits for all learners, with snacks offered exclusively for daycare learners opting for 3:00 pm to 6.30 pm slot.
- The meal program offers an all inclusive option (breakfast, lunch and fruit). Partial meal options are not available.
- Since meal fee is charged quarterly, opting out will apply for the full quarter. Parents can opt back in only at the start of the next quarter by submitting a written request to the Parent Engagement Representative at least one month in advance.
- Air-conditioned vehicles equipped with GPS tracking, CCTV cameras, seat belts, and female attendants are provided.
- Transport and meal fees are charged for 11 months but divided into four equal quarterly installments for payment.
- Cost of stationery will be on actuals.
- All charges are non-refundable, except for the security deposit.